



MP Glasses Virtual Try-On

Try out MP Glasses Virtual Try-On demo on our website

<https://www.motionportrait.com/en/glasses/>

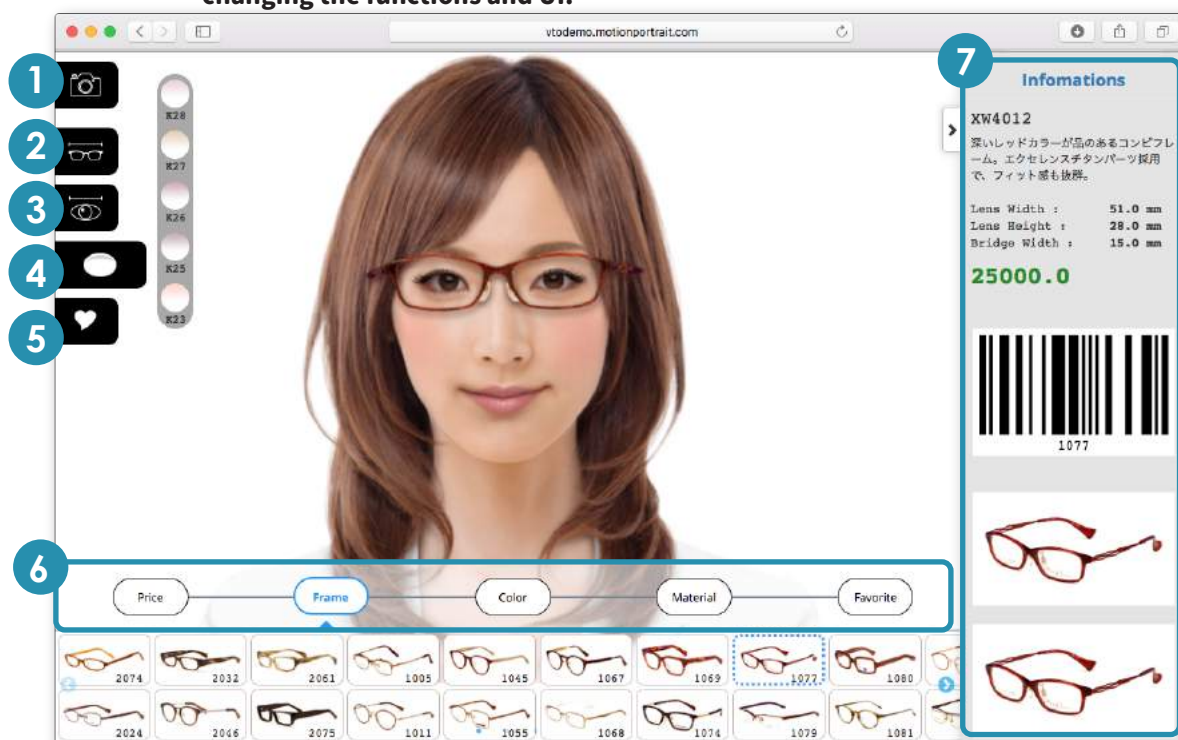


Our standard platform is simple to install



Install without initial cost

- The standard platform is equipped with basic functions.
- The simulator can be introduced without initial development cost if used without changing the functions and UI.



1 Camera/Library

Take photos using the camera or select one from the photo library

3 Lens effect

Select lens effect based on near or far vision

5 Favorites

Function for adding to favorites

7 Product information

Display product information (product descriptions/price/attributes)

2 PD value adjustment

Adjust PD values with slider

4 Lens color

Select lens color (standard 5 colors)

6 Product selection filters

Search products based on attributes (price/ shape/ color/ material/ favorites)



The license fee is based on the number of products added to the simulator

- You can start on a small scale by focusing on the frames you want to promote.
- Contact us for the detailed price structure.



Easy to add to Websites

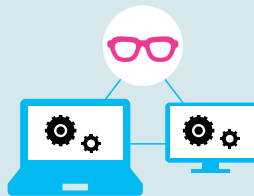
- Adding the simulator to existing Websites is simple and can be done in no time.
- We provide a server for operating the simulator.

MP Glasses Simulator Capabilities

1

Integrated Platform

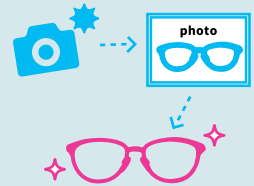
Offers an integrated platform that goes beyond a front-end application to include a back-end server for product data management and a registration/distribution system.



2

Easy Data Creation

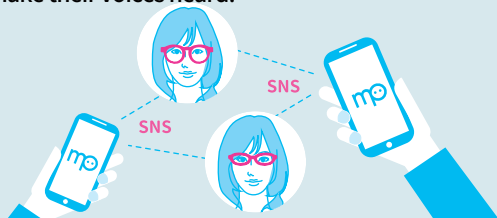
Uses photos from digital cameras and smartphones to easily make new data records without the hassle of 3D models.



3

SNS Friendly

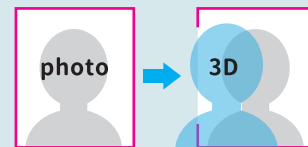
Customers can use Compare Mode to connect their favorite items list with SNS accounts. Simulation images can be posted and shared easily for friends and family to make their voices heard.



4

Astonishing 3D Images From Just 1 Photo

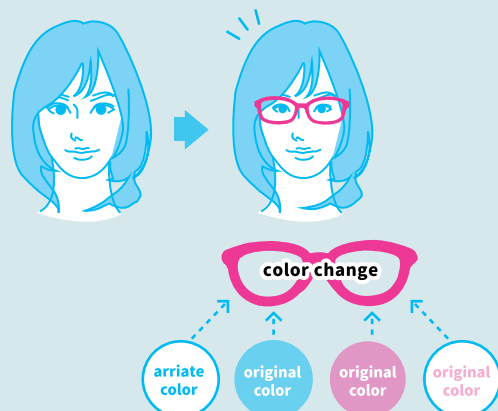
Our technology can precisely detect facial contours and features from your photo in just a few seconds.



6

Accurate Simulation

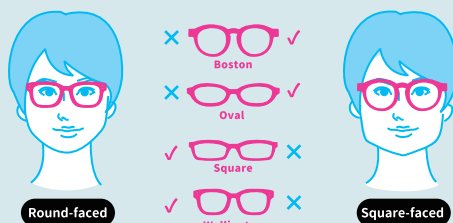
Displays a faithful reproduction of wearing real glasses thanks to an accurate simulation utilizing face size and PD values. Responsive to the effect of lens strength on facial appearance for both near-sightedness and far-sightedness. Also includes tinted lens options.



5

Facial Analysis Features

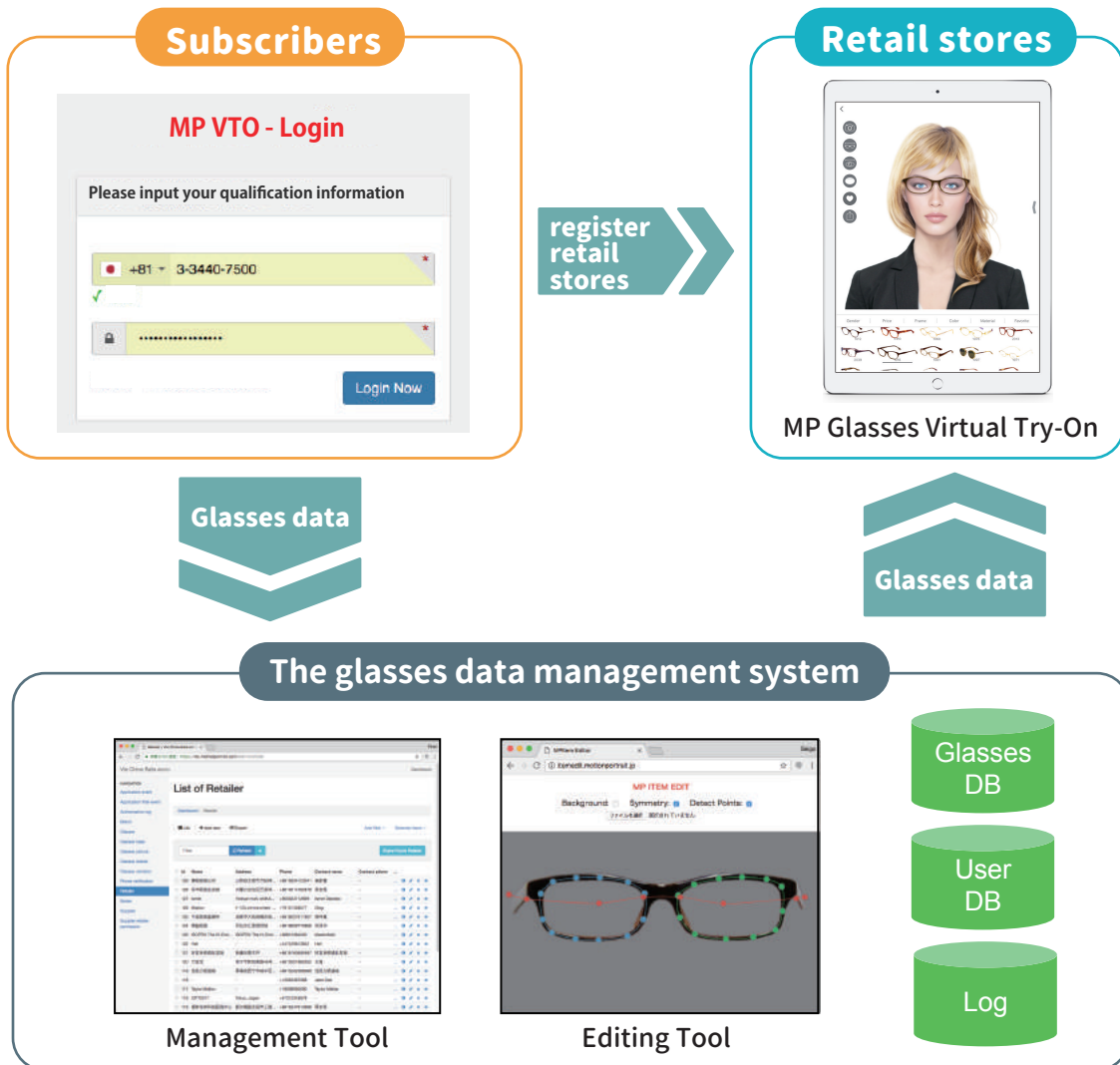
Our original facial analysis software makes it possible to get advanced recommendations based on the customer's unique facial features. The recommendation feature improves itself by recording and analyzing the names of the products that are actually purchased by customers.





The glasses data management system

- In addition to the front-end application, we also provide a system for adding and managing data of glasses.
- We provide a server for operating the system.



Subscribers can directly add data of the glasses

- A dedicated account will be provided to use the system for addition and management of data.
- The management tool can be used to add and delete data of glasses, change the display order, and edit various attributes.



Subscribers can prepare data of the glasses

- We provide an editing tool for preparing data to be used in the simulator.
- If you send us pictures of the glasses, we can prepare the data for you.



Configure products managed by retail stores

- You can register retail stores with the management tool and select products managed by each store.
- Glasses data of the configured products can be downloaded to the terminal of the retail stores from the glasses data management system.

Available on various platforms | iOS/Android/Windows/Mac/HTML5 |

iOS

